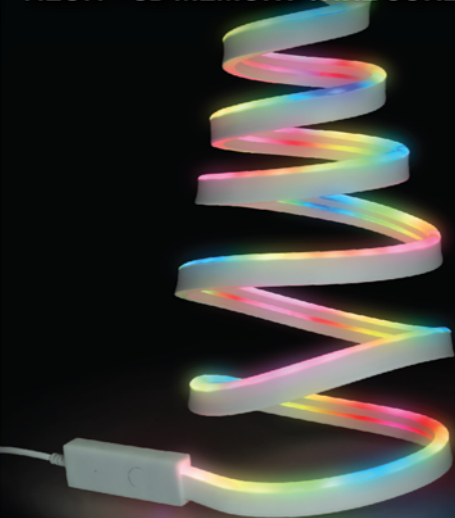


 **MONSTER**® SMART
ILLUMINESSENCE™

NEON FLEX+

6.5ft/2m SOUND REACTIVE
MULTICOLOR RGBW+IC FLOW
NEON + 3D MEMORY WIRE CORE



QUICK START GUIDE

MLB7-1066-RGB

v1.0 0721

GETTING STARTED

Thank you for choosing the Neon Flex+ 3D Light Strip by Monster Smart Illuminence. This quick start guide will help you with setup and installation of your device.

WHAT'S IN THE BOX

- 6.5ft/2m Neon Flex+ (USB Powered with Controller)
- Mounting Clips and Screws
- Damage-Free 3M Command Adhesive
- Quick Start Guide

WHAT DO YOU NEED?

- Cellphone or tablet with
Android™ 6.0 Marshmallow or higher / iOS 10 or higher
- Wi-Fi router with an internet connection
- Wi-Fi 2.4GHz 802.11n

Before setup, make sure your phone is connected to the **2.4GHz Wi-Fi network** that your Flex+ will be placed on. For easier pairing, turn on Location and Bluetooth to quickly find nearby devices.

TIP: Do you know your Wi-Fi network name and password? Write it down now if it's hard to remember.

ANYTHING ELSE?

Your Flex+ can be powered by any 5V 1A USB wall adapter (not included)

TIP: Save these instructions for future reference.

STEP 1

Remove your Flex+ and all components from the box.

NOTE: To prevent overheating, uncoil the light strip before use.

Neon Flex+ Light Strip
(6.5ft/2m)



Mounting Accessories
(x4 sets)



Controller (attached)

STEP 2

Download the **MONSTER SMART** app from the App Store (for iPhone) or Google Play Store (for Android phones).



free
download

STEP 3

Make sure your phone or tablet is successfully connected to the **2.4GHz Wi-Fi network** that your Flex+ will be placed on and **ensure that your Bluetooth and Location are enabled**.

Open the **MONSTER SMART** app and create an account by following the on-screen instructions.

STEP 4

It is recommended to first pair your Flex+ in a location close to your router **BEFORE** installation.

Connect the USB plug to a powered 5V 1A USB wall adapter (not included). Press the power button twice to turn on the light.



Press and hold the power button for 5-6 seconds to enter pairing mode or change between pairing modes. The Flex+ will begin blinking when it has entered pairing mode and is ready to pair.

Pairing Modes:

EZ MODE - RAPIDLY BLINKING LED (default)

EZ Mode is the default mode for quick and easy pairing setup.

AP MODE - SLOWLY BLINKING LED

Access Point Mode is a secondary setup that can help connect to mixed networks. If you have trouble pairing, see troubleshooting on page 7.



Monster Smart devices only work on a 2.4GHz Wi-Fi network. Many newer home Wi-Fi networks are mixed networks that are set to 5GHz by default (ex: AT&T, Verizon) and you may need to use AP pairing mode to connect. If you still have difficulty, contact your Internet Service Provider for assistance with 2.4GHz network setup.

NOTE: At any time during pairing mode you can disconnect the power and then reconnect it to cancel pairing and operate the product without Wi-Fi using the controller. Advanced features will not be available.

STEP 5

In the **MONSTER SMART** app, select the "+" in the upper right corner of the home screen to add a new device and then select "Lighting (Wi-Fi)" to add your device.



If needed, click "Net Pairing Mode" in the upper right to switch the default EZ pairing mode for 2.4GHz Wi-Fi networks to AP mode for mixed Wi-Fi networks.

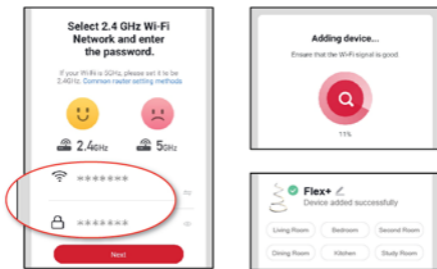
STEP 6

EZ mode
(default)

Confirm that the LED indicator is **RAPIDLY** blinking. Confirm that the network displayed is your **2.4GHz Wi-Fi network**, then enter your Wi-Fi password and click "Confirm".

AP mode

Confirm that the LED indicator is **SLOWLY** blinking. Confirm the network is your **mixed Wi-Fi network**, enter your Wi-Fi password and click "Confirm". Follow the on-screen instructions to set up your device via wireless access point.



Once complete, your device will be connected to the network. Confirm or change the settings for your device and then click "Done". Your Flex+ is now setup and you can proceed to installation.

You can now use the app to add voice control (see pg 10), adjust settings, create custom lighting effects, set schedules, and more!

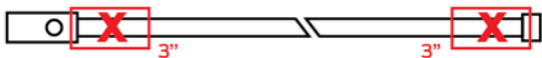
3D MEMORY WIRE CORE

The Flex+ features a Smart Flex 3D Memory Wire Core that bends and holds its shape. Use your Flex+ to easily design and install glowing shapes, words, symbols, and unique 3D sculptures, or to wrap around places like bedposts, railings, or anywhere you want to illuminate your world with color. Here are some tips to remember when creating your designs:



TIP 1

Avoid creating bends in the Flex+ within 3" (three inches) of either end of the strip.



TIP 2

Make curves rather than corners. While the housing of the Flex+ is designed to protect the electric components of the light strip during bending, extremely sharp bends may cause damage.



TIP 3

Depending on the shape of your design, you may only need one or two mounting clips. Longer or more linear designs will require more. Create your pattern first, then plan your mounting clip locations.

WALL INSTALLATION

STEP 1

Determine where you will install the Flex+. Make sure the location is within the range of your Wi-Fi network and that it is close enough to a power source like a 5V 1A USB wall adapter (not included).

NOTE: Do not attach this product to wallpaper, brick, unfinished wood, or other rough or uneven surfaces.

STEP 2

Clean the mounting surface with a clean cloth and rubbing alcohol to remove any dust or oils that will weaken the adhesive. Be sure to let this surface dry before installation.

STEP 3

Peel off one of the backings of the adhesive and firmly stick it onto the back of the mounting clip. Then peel off the other side and firmly press it onto the wall. **Press and hold for 10 seconds.** It is recommended to let this set for 4hrs before use for best adhesion.

TIP: If you prefer a permanent installation, use the included screws and insert them into the available openings in the mounting clips.

STEP 4

Insert the Flex+ into the mounting clips.



HAVING TROUBLE WITH SETUP?

Don't return this product to the retailer, we're here to help.
Please call/write us for customer support: 866-246-2008
customerservice@monsterilluminescence.com

Q: Why is my device failing to connect to my Wi-Fi network?

A1: Make sure your phone or tablet is successfully connected to the **2.4GHz Wi-Fi network** that your device will be placed on.

A2: You may first need to enable and allow location services on your phone or tablet to find nearby devices.

A3: If your Wi-Fi network is a mixed 2.4GHz/5GHz network, try using AP pairing mode for better results.

A4: If you still have issues with your mixed network, you may need to access your router settings and/or call your Internet Service Provider to create a separate 2.4GHz network.

Q: Can I cut this LED Light Strip?

A1: No, this product contains a metal wire core that cannot be cut.

Q: Can I attach additional LED Light Strips to this one?

A1: Due to the fully sealed design, this strip is not equipped with an expansion plug. Please group your Flex+ devices in the app. For instructions on how to group devices, please see page 9.

Q: Why is the adhesive tape not holding?

A1: In order to properly install this product, the mounting surface must first be cleaned with rubbing alcohol and allowed to air dry.

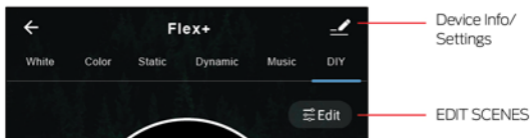
A2: This adhesive is not recommended for use on unpainted brick, raw wood, uneven/bumpy surfaces, or wallpaper.

A3: Mounting this product in excessively hot or humid environments may weaken the adhesive.

For other frequently asked questions please visit our website at www.monsterilluminescence.com

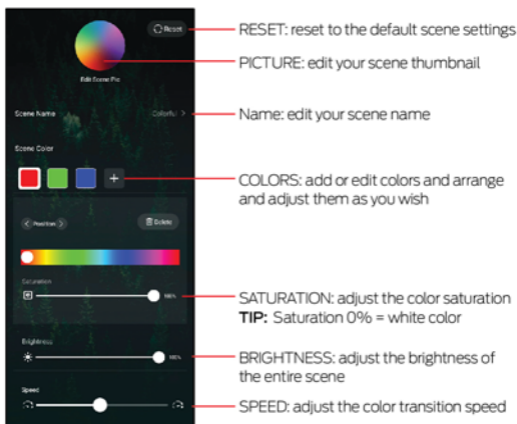
HOW TO USE

APP CONTROL



- WHITE: Multiwhite selector wheel and buttons with brightness adjust
- COLOR: Multicolor selector wheel and buttons with brightness adjust
- STATIC: Customizable static color scenes with with color selectors and brightness adjust. Each Static scene has it's own unique pattern.
- DYNAMIC: Flowing multicolor scenes with brightness and speed adjust
- MUSIC: Sound reactive multicolor scenes with mic sensitivity adjust
- DIY: Customizable flowing multicolor scenes with color selectors, brightness and speed adjust. Each DIY scene has it's own unique flowing pattern. Create and save your favorites!

EDIT SCENES



CONTROLLER



SCENES:
click - change between preset scenes in Static, Dynamic, Music, and DIY (or access the custom edits of those scenes, requires Wi-Fi pairing and app)

POWER:
double click - click twice quickly to power on or off your device

RESET:
press and hold - reset the device and to pair to your Wi-Fi network

(microphone opening)

GROUPING DEVICES

The Flex+ is great to use in multiples, you can control each separately or easily group multiple lights together in the app to control them all as one. Click on the settings button in the upper right corner and then click **"Create Group"** to group your devices.



NOTE: Grouping different Monster Smart Illuminescence devices with different features may cause communication issues when selecting Scenes. For best results create groups of the same products. If you would like to group together different items, it is recommended to control using the Color settings only, rather than Scenes.



AMAZON VOICE CONTROL SETUP

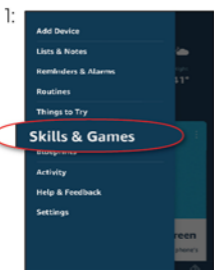
Make sure your Amazon Alexa device is installed and setup

STEP 1: Open the Alexa app and go to Skills in the menu

STEP 2: Search for and choose **MONSTER SMART**

STEP 3: Enable the Skill and authorize your account using your login information

NOTE: Use the same login information that you used to create your Monster Smart account



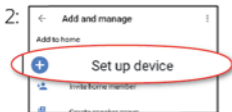
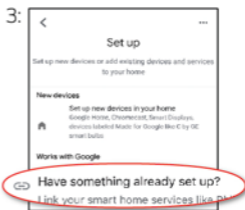
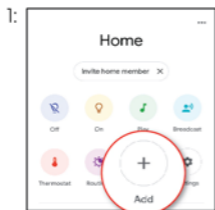
At any time, go to the Alexa app to set nicknames and rooms for your devices. You can also rename devices in the Monster Smart app.

Using the name Flex+, or the name you assigned your Flex+, you can ask Alexa to control your device, just say "Alexa," and ask: **"Turn on my Flex+", "Set my Flex+ to blue", "Set my Flex+ to 50% brightness",** and more!

GOOGLE VOICE CONTROL SETUP

Make sure your Google Assistant device is installed and setup.

- STEP 1: Open the Google Home app, go to the Home menu, and tap the "+" button
- STEP 2: Click "Set up device"
- STEP 3: Click "Have something already set up?"
- STEP 4: Search for and choose **MONSTER SMART** and authorize your account using your login information
- NOTE: Use the same login information that you used to create your Monster Smart account



At any time, go to the Google Home app to set nicknames and rooms for your devices. You can also rename devices in the Monster Smart app.

Using the name Flex+, or the name you assigned your Flex+, you can ask your Google Assistant to control your device, just say "Hey Google" and say: **"Turn on my Flex+", "Set my Flex+ to blue", "Set my Flex+ to 50% brightness",** and more!



Add to Siri

SIRI VOICE CONTROL SETUP

Requires iPhone running iOS 12 or later.

- STEP 1: Open the **MONSTER SMART** app and go to the "Smart" menu, tap the "+" button to create a new Tap To Run Smart Scene
- STEP 2: Tap "launch Tap To Run" and fill out the information
- STEP 3: Once your Smart Scene is created and saved, click the button that appears at the bottom of the screen that says "Add to Siri" to open the list of options
- STEP 4: Select your new Tap To Run Smart Scene from the list and click "Add to Siri"
- STEP 5: Create a custom phrase to say to Siri to run your Smart Scene (this can be any verbal command)

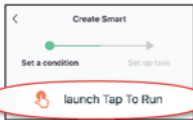
1:



3:



2:



4:



Now Siri can use your voice and custom verbal command to turn your device on or off, activate your last used lighting scene, adjust Flex+ at the same time as your other smart devices, or whatever you've set up as your Tap To Run Smart Scene.

WARRANTY

1 Year Limited Warranty - Please read and understand all instructions before using this product. If damage is caused by failure to follow the instructions, this warranty is null and void.

SAFETY

• **Keep these instructions**

- Do not drop, puncture, or disassemble this product
- Do not install this product in any way other than what is outlined in this guide
- Do not attach this product to wallpaper, brick, ceilings, or floors
- Do not use this product in wet or very humid environments or expose to dripping or splashing liquids of any kind
- Do not immerse in water
- Avoid long exposure to direct sunlight, which may cause damage
- Do not use this product in small, enclosed locations that could limit the flow of air or trap excess heat
- Do not expose this product to open flames
- Do not use the product in a strong magnetic field
- Be sure to use the specified power source and voltage
- Be sure the wall charger is inserted all the way into the outlet
- Place the unit on a flat, sturdy surface during use
- Do not allow small children to operate, modify, or install this device unsupervised
- Use a clean, soft cloth to clean - do not use any corrosive cleaners/oils to clean
- For indoor use only

 **MONSTER**

Powered by
 **XTREME**

PATENT PENDING

Flex+ | Model: MLB7-1066-RGB | Input: USB 5V 1A
FCC ID: 2AHAS-MLB71066 | IC: 26069-MLB71066 | HVIN: MLB7-1066-RGB



The illustrated products and specifications may differ slightly from those supplied. The M Monster logo and IlluminEssence are trademarks or registered trademarks of Monster, Inc. or its subsidiaries in the U.S. and other countries and are used under license. Apple and the Apple logo are trademarks of Apple Inc., registered in the U.S. and other countries. App store is a service mark of Apple Inc. Google, Android and Google Play are trademarks of Google LLC. Pre-set-up required. Amazon, Alexa, and all related logos are trademarks of Amazon.com, Inc. or its affiliates. All other brand names are trademarks of their respective owners. Neither Jern Accessories, Inc. nor Monster, Inc. is affiliated with the respective owners of their trademarks. Licensed and Manufactured by Jern Accessories, Inc. South Plainfield, NJ 07080. Made in China.

FCC Compliance

This device complies with Part 15 of the FCC. Operation is subject to the following two conditions: (1) this device may not cause harmful interference, and (2) this device must accept any interference received, including interference that may cause undesired operation. Changes or modifications not expressly approved by the party responsible for compliance could void the user's authority to operate the equipment.

This equipment has been tested and found to comply with the limits for a Class B digital device, pursuant to part 15 of the FCC Rules. These limits are designed to provide reasonable protection against harmful interference in a residential installation. This equipment generates uses and can radiate radio frequency energy and, if not installed and used in accordance with the instructions, may cause harmful interference to radio communications. However, there is no guarantee that interference will not occur in a particular installation. If this equipment does cause harmful interference to radio or television reception, which can be determined by turning the equipment off and on, the user is encouraged to try to correct the interference by one or more of the following measures:

—Reorient or relocate the receiving antenna.

—Increase the separation between the equipment and receiver.

—Connect the equipment into an outlet on a circuit different from that to which the receiver is connected.

—Consult the dealer or an experienced radio/TV technician for help.

RF Exposure Statement

To satisfy FCC's RF exposure requirements, a separation distance of 20 cm or more should be maintained between the antenna of this device and persons during device operation. To ensure compliance, operations at closer than this distance is not recommended.

ISED Warning

This device complies with Innovation, Science, and Economic Development Canada license-exempt RSS standard(s). Operation is subject to the following two conditions:

(1) this device may not cause interference, and

(2) this device must accept any interference, including interference that may cause undesired operation of the device.

Le présent appareil est conforme aux CNR d'Innovation, Sciences et Développement économique Canada applicables aux appareils radio exempts de licence. L'exploitation est autorisée aux deux conditions suivantes:

(1) l'appareil ne doit pas produire de brouillage, et

(2) l'utilisateur de l'appareil doit accepter tout brouillage radioélectrique subi, même si le brouillage est susceptible d'en compromettre le fonctionnement.

The device is compliance with RF exposure guidelines, users can obtain Canadian information on RF exposure and compliance. The minimum distance from body to use the device is 20cm.

Le présent appareil est conforme Après examen de ce matériel aux conformité ou aux limites d'intensité de champ RF, les utilisateurs peuvent sur l'exposition aux radiofréquences et la conformité and compliance d'acquérir les informations correspondantes. La distance minimale du corps à utiliser le dispositif est de 20cm.

1 YEAR LIMITED WARRANTY

Jem Accessories, Inc. Limited Warranty Policy for Monster Smart Products Last Updated: March 27, 2020

This limited warranty contains important information about your rights and obligations, as well as limitations and exclusions that may apply to you.

1. WHAT THIS LIMITED WARRANTY COVERS; PERIOD OF COVERAGE Jem Accessories, Inc. ("Jem Accessories"), 32 Brunswick Ave, Edison, New Jersey, USA, warrants to the owner of the endorsed Monster Smart-branded product contained in this box ("Product") will be free from defects in materials and workmanship for a period of one year. Notwithstanding the foregoing, the Warranty Period for a factory refurbished Product is one (1) year, even if installed by a professional. If the Product fails to conform to this Limited Warranty during the Warranty Period, Jem Accessories will, at its sole discretion, either (a) repair or replace any defective Product or component; with proof of purchase using original documentation. Repair or replacement may be made with a new or refurbished product or components, at Jem Accessories's sole discretion. If the Product or a component incorporated within it is no longer available, Jem Accessories may, at Jem Accessories's sole discretion, replace the Product with a similar product of similar function. This is your sole and exclusive remedy for breach of this Limited Warranty. Any Product that has either been repaired or replaced under this Limited Warranty will be covered by the terms of this Limited Warranty for the longer of (a) ninety (90) days from the date of delivery of the repaired Product or replacement Product, or (b) the remaining Warranty Period. This Limited Warranty is not transferable from the original purchaser to subsequent owners.

2. TOTAL SATISFACTION RETURN POLICY If you are the original purchaser of the Product and you are not

satisfied with this Product for any reason, you may return it in its original condition to the retailer in compliance with the retailer's return policy.

3. WARRANTY CONDITIONS; HOW TO GET SERVICE IF YOU WANT TO CLAIM UNDER THIS LIMITED WARRANTY Before making a claim under this Limited Warranty, the owner of the Product must (a) visit monsterilluminescence.com/support during the Warranty Period to provide notice of your warranty claim and describe the alleged failure, and (b) comply with Jem Accessories (or its authorized distributor's) return shipping instructions. Jem Accessories will have no warranty obligations with respect to a returned Product if it determines, at its reasonable discretion after examination of the returned Product, that the Product is an Ineligible Product (defined below). Jem Accessories will bear all costs of return shipping to owner and will reimburse any shipping costs incurred by the owner, except with respect to any Ineligible Product or products shipped internationally, for which the owner will bear all shipping costs.

4. WHAT THIS LIMITED WARRANTY DOES NOT COVER This Limited Warranty does not cover the following (collectively "Ineligible Products"): (i) Products marked as "sample" or "Not for Sale", or sold "AS IS"; (ii) Products that have been subject to: (a) modifications, alterations, tampering, or improper maintenance or repairs; (b) handling, storage, installation, testing, or use not in accordance with any quick start guide, manual or other instructions provided by Jem Accessories; (c) abuse or misuse of the Product; (d) breakdowns, fluctuations, or interruptions in electric power or the telecommunications network; or (e) Acts of God, including but not limited to lightning, flood, tornado, earthquake, or hurricane; or (iii) any non-Jem Accessories branded hardware products, even if packaged or sold with Jem Accessories hardware. This Limited Warranty does not cover consumable parts, including batteries, unless damage is due to defects in materials or workmanship of the Product, or software (even if packaged or sold with the product). Jem Accessories recommends that you use only authorized service providers for maintenance or repair. Unauthorized use of the Product or software can impair the Product's performance and may invalidate this Limited Warranty.

5. DISCLAIMER OF WARRANTIES Except as stated above in this limited warranty, and to the maximum extent permitted by applicable law, Jem Accessories disclaims all express, implied, and statutory warranties and conditions with respect to the product, including the implied warranties of merchantability and fitness for a particular purpose. To the maximum extent permitted by applicable law, Jem Accessories also limits the duration of any applicable implied warranties or conditions to the duration of this limited warranty.

6. LIMITATION OF DAMAGES In addition to the above warranty disclaimers, in no event will Jem Accessories be liable for any consequential, incidental, exemplary, or special damages, including any damages for lost data or lost profits, arising from or relating to this limited warranty or the product, and Jem Accessories's total cumulative liability arising from or related to this limited warranty or the product will not exceed the amount actually paid for the product by the original purchaser.

7. LIMITATION OF LIABILITY The Jem Accessories online services at monsterilluminescence.com ("services") provide you information ("product information") regarding your Jem Accessories products or other peripherals connected to your products ("product peripherals"). The type of product peripherals that may be connected to your product may change from time to time. Without limiting the generality of the disclaimers above, all product information is provided for your convenience, "as is", and "as available". Jem Accessories does not represent, warrant, or guarantee that product information will be available, accurate, or reliable or that product information or use of the services or product will provide safety in your home. You use all product information, the services, and the product at your own discretion and risk. You will be solely responsible for (and Jem Accessories disclaims) any and all loss, liability, or damages, including to your wiring, fixtures, electricity, home, product, product peripherals, computer, mobile device, and all other items and pets in your home, resulting from your use of the product information, services, or product. Product information provided by the services is not intended as a substitute for direct means of obtaining the information. For example, a notification provided through the service is not intended as a substitute for audible and visible indications in the home and on the product, nor for a third party monitoring service that monitors alarm state.

8. YOUR RIGHTS AND THIS LIMITED WARRANTY This Limited Warranty gives you specific legal rights. You may also have other legal rights that vary by state, province, or jurisdiction. Likewise, some of the limitations in this Limited Warranty may not apply in certain states, provinces or jurisdictions. The terms of this Limited Warranty will apply to the extent permitted by applicable law. For a full description of your legal rights you should refer to the laws applicable in your jurisdiction and you may wish to contact a relevant consumer advisory service.

If you need to start a warranty claim for your Monster Smart device, please reach out to Customer Support by emailing customerservice@monsterilluminescence.com or calling our support number 866-246-2008.

Please allow 7-10 business days to process warranty claims. Customers located outside of U.S. will be responsible for all shipping costs.