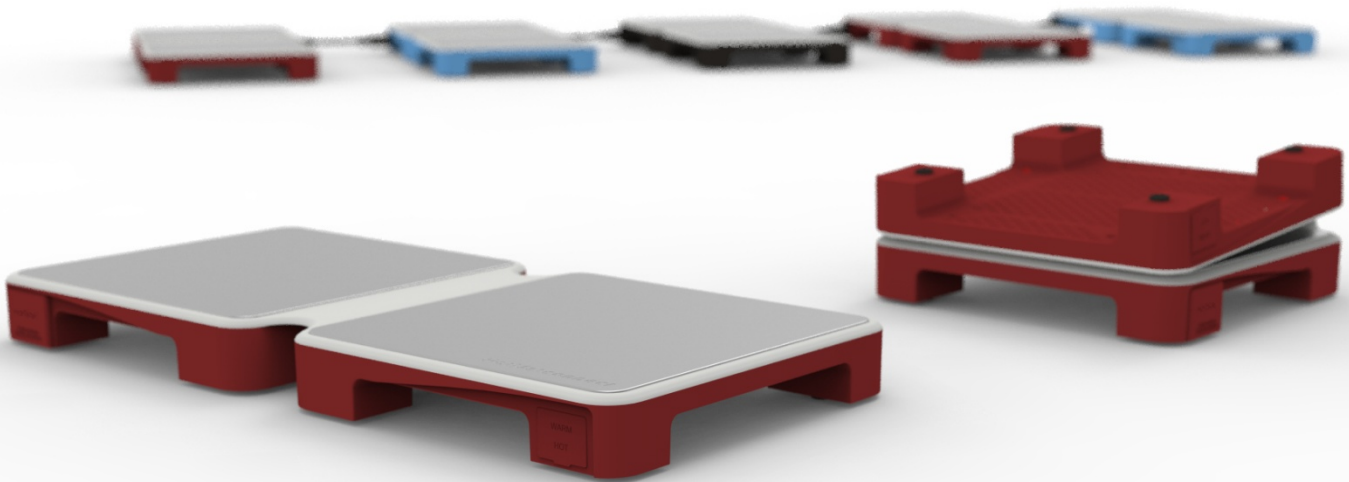


# myhotmat<sup>TM</sup> Connect

Modular 2 Dish Foldable Warming Tray

Instruction Booklet

Model: **2DISH connect**



[www.myproducts.io](http://www.myproducts.io)

## **Introduction**

Congratulations! You are now the proud owner of a **myhotmat connect**. Please read these instructions carefully before using your device for the first time.

The **myhotmat connect** is designed to be your hosting and dining companion. Its features are especially designed to make your hosting experience fun and easy.

**myhotmat connect** keeps your cooked food at just the right temperature for serving. It allows you easy access to the food close to the dining table, simplifying the logistics of serving. When multi-course and multi-dish meals need to be kept warm, it acts as a modular system enabling the connection of up to 5 **myhotmat connect** units to warm up to 10 dishes using one electric socket!

Finally, after a great dinner, just store your **myhotmat connect** in any ordinary drawer. No need for "professional catering storage," Your kitchen drawer is just right!

Wishing you special dining moments and delicious food!

**myhotmat.** Your hosting companion.

## **When using electrical appliances, basic safety precautions should always be followed including the following:**

1. Read all instructions.
2. DO NOT touch hot surfaces.
3. To protect against electrical hazards, DO NOT immerse cord, plugs, or the appliance in water or other liquid.
4. Close supervision is necessary when any appliance is used by or near children.
5. Unplug from outlet when not in use and before cleaning. Allow to cool before folding and before cleaning the appliance.
6. DO NOT operate any appliance with a damaged cord or plug or after the appliance malfunctions, or has been damaged in any manner. Return appliance to Rolla RWT for examination, repair or adjustment.
7. The use of accessories or attachments not recommended by Rolla RWT may cause hazards.
8. DO NOT put food directly on the warming tray. Always use heat-proof dishes, containers and crockery.
9. DO NOT use outdoors.
10. DO NOT let cord hang over edge of table or counter or touch hot surfaces.
11. DO NOT place on or near a hot gas or electric burner or in a heated oven.
12. Extreme caution must be used when moving an appliance containing hot liquids.
13. This appliance is for household use only. DO NOT use this appliance for other than its intended use.
14. DO NOT leave unit unattended while in use.
15. This appliance can be used by children aged from 8 years and above and persons with reduced physical, sensory or mental capabilities or lack of experience and knowledge if they have been given supervision or instruction concerning use of the appliance in a safe way and understand the hazards involved.
16. Children shall not play with the appliance.
17. Cleaning and user maintenance shall not be made by children without supervision.

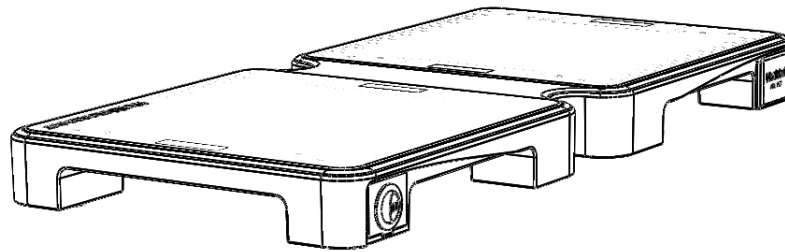
A short supply cord is provided to reduce the hazards of becoming entangled in or tripping over a long cord. Extension cords may be used if care is exercised in their use. If an extension cord is used, the marked electrical rating of the detachable power-supply cord or extension cord should be at least as great as the electrical rating of the appliance. If the appliance is of the grounded type, the extension cord should be of a grounded 3-wire cord. The extension cord should be arranged so that it will not drape over the counter top or table top, where it can be pulled on by children or tripped over.

### **GROUNDING PLUG**

To reduce the risk of electric shock this appliance has a grounded plug. If the plug does not fit fully into the electrical outlet contact a qualified electrician. Do not modify the plug in any way or use an adaptor.

## **BEFORE FIRST USE**

Wipe the aluminum and silicon surfaces of the Warming Tray with a damp cloth; dry thoroughly.



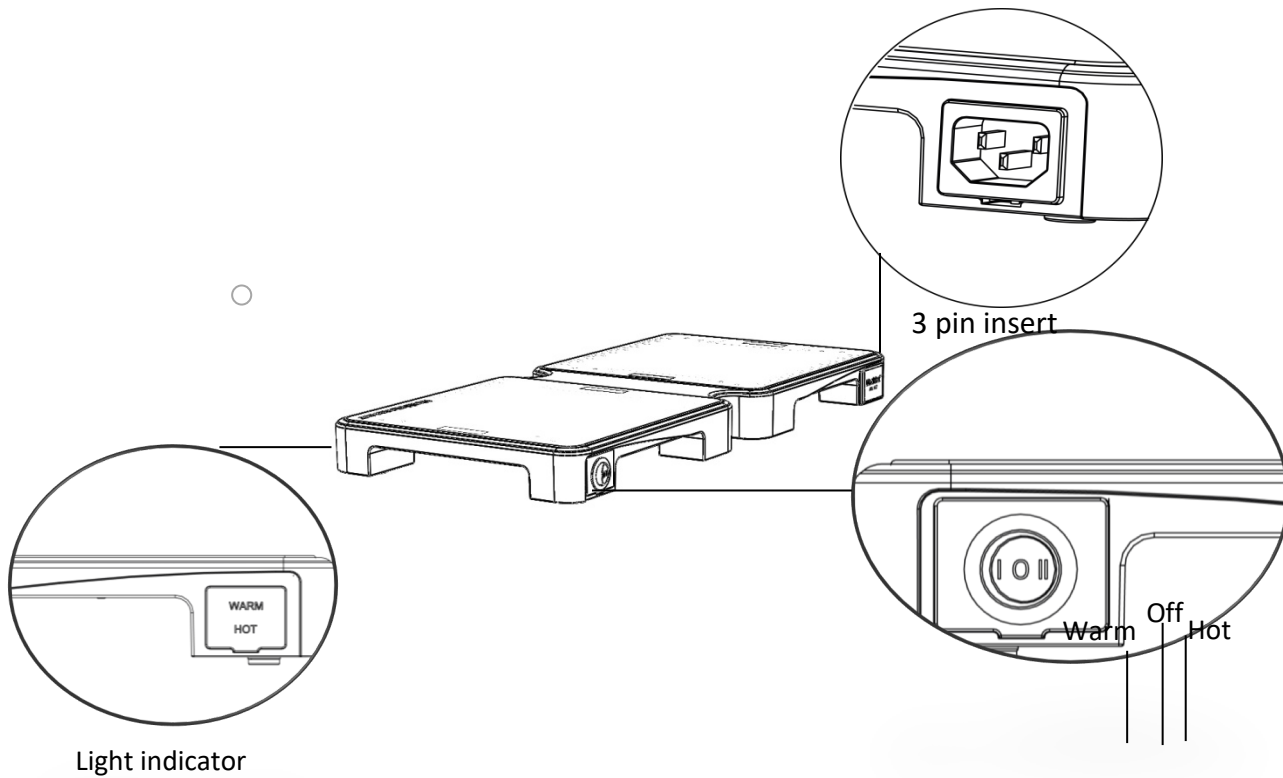
## **HOW TO USE**

Unfold the myhotmat™. Always make sure your myhotmat is placed on a surface material that can withstand heat of 130 degrees Fahrenheit (55 degrees Celsius). Connect the power cord to the 3-pin insert in the Warming Tray and then plug into an A.C. outlet. Ensure that the voltage indicated on the rating plate of the appliance agrees with the mains voltage in your area. Connect the appliance only to a properly earthed power point. (Use of a residual current device (RCD) reduces the risk of electric shock, seek the advice of an electrician.) While the appliance is in use, the mains plug must be accessible in case of an emergency. To ensure continued protection against risk of electric shock, connect to properly grounded outlets only. If the power point is unsuitable for accommodating the plug of your appliance, have the power point changed by a licensed electrician

Press the switch to your chosen heat setting: one line - warm, two lines - hot. The Warming Tray will take approximately 15 minutes to reach the maximum temperature chosen.

The red 'Power' indicator light located opposite the switch will remain 'On' as long as the Warming Tray is plugged in.

Please note that when the myhotmat™ is connected for the first time, it might produce a "plastic smell" for its first few hours of operation.



**IMPORTANT:** Porcelain and china dishes may cause scratches. Place dishes carefully on the aluminum Teflon-coated heating surface to prevent scratching.

### **HELPFUL HINTS**

- Ensure that the Warming Tray is always placed on a flat and sturdy surface.
- Covered crockery dishes with a flat base and edges that are not too high keep food warmest.

### **CLEANING**

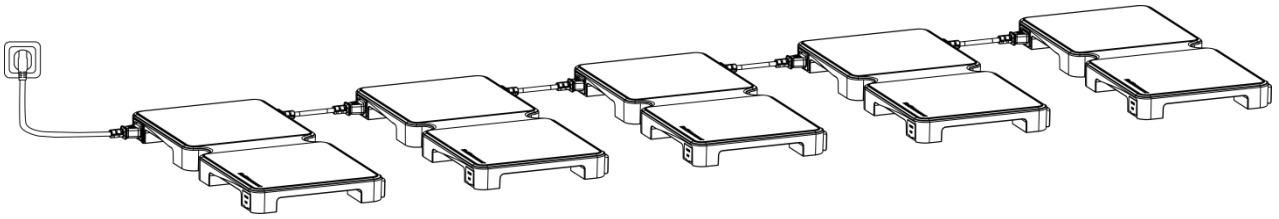
**Always unplug the appliance and let it cool before cleaning.**

Clean the silicon and aluminum surfaces by wiping with a damp soapy cloth. Dry thoroughly.

NEVER immerse the Warming Tray in water or any other liquid.

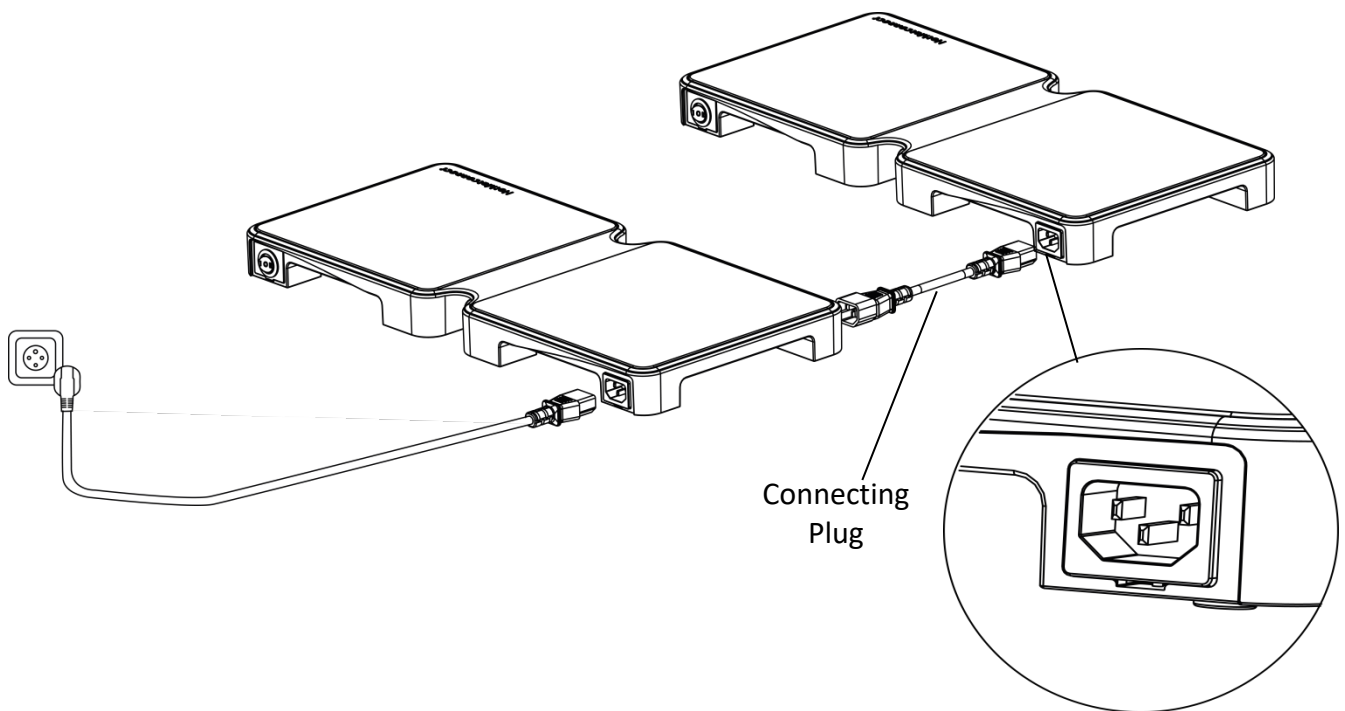
NEVER use abrasive cleaning products, bleach or alcohol.

## **CONNECTING myhotmat UNITS (up to 5 units)**



Your **myhotmat connect** can connect up to 5 identical units using only one socket connection. To connect an additional unit, use the dedicated connecting cable and attach it first to the 3-pin insert of the additional unit to be added. Then connect it to the opposite insert of the original unit. To connect more units (up to 5 units only), repeat this process and connect each additional unit it to the preceding unit.

After all units are connected, adjust each unit to your temperature of choice.



Correct disposal of this product



This marking indicates that this product should not be disposed with other household wastes throughout the EU. To prevent possible harm to the environment or human health from uncontrolled waste disposal, recycle it responsibly to promote the sustainable reuse of material resources. To return your used device, please use the return and collection systems or contact the retailer where the product was purchased. They can take this product for environmental safe recycling.