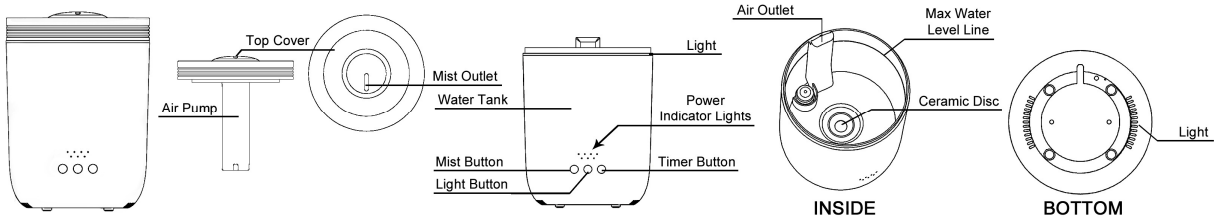


GuardianMist®

Essential Oil Diffuser and Humidifier

INSTRUCTIONS

PARTS



FEATURES

Essential Oil Diffuser and Cool Mist Humidifier
Add essential oil directly to the water and enjoy therapeutic benefits.

1. Water Capacity: 2200 mL (74.4 fl oz)
2. Coverage Area: Up to 700 sq ft
3. Continuous Run Time:
 - High Mist Intensity: Up to 11 hours
 - Low Mist Intensity: Up to 22 hours
 - * Run time will vary depending on humidity levels and other external factors.
4. Mist Shut-Off Timer: 2, 4, and 8 hours
5. Light Mode: Bright white, soft white, or Off
6. Sleep Mode
7. Automatic safety shut-off
8. Power: cETL us Certified Plug-in Ready Power Cord

CARE & MAINTENANCE

Only use the power cord supplied with the unit.
Always unplug the power cord from electrical outlet before filling.
Essential oil should not come in contact with the exterior surface of unit.

Do not submerge unit into water to avoid risk of electric shock.
Do not put fingers, hands, or any object into the unit while operating.
Do not attempt to adjust or repair the unit.
Do not touch the water while unit is operating.
Do not fill water through the Mist Outlet or the Air Outlet.
Do not place the unit near heat sources or direct sunlight.
Use two hands when moving your humidifier.
Use this unit only as intended as described in this manual.

TO CLEAN:

* SpaRoom® KLENZOR™ tablets may be used to renew diffuser / humidifier to like-new condition.

The Water Tank Chamber is injected with an antimicrobial agent that prevents microbial build up in the water during extended use.

Empty water from the Water Tank away from the Air Outlet. The Ceramic Disc should not come in contact with any hard or sharp objects. To remove possible buildup, rinse with a white vinegar and water solution. Dry thoroughly with a soft cloth. Do not use strong cleaning agents.

INSTRUCTIONS FOR USE

Place unit on a flat, water-resistant surface as moisture may cause damage to carpet, finished floors, furniture, or walls.

1. Remove the Top Cover from the Water Tank.
2. Fill the Water Tank with tap water up to the Max Water Level Line. Do not overfill. Add approximately 10 drops of essential oil per 1 liter of water into the Water Tank.
3. Replace Top Cover onto the Water Tank.
4. Plug the Power Cord into an electrical wall outlet. It will take a few minutes for the essential oil to blend with the water before fragrance begins diffusing.

5. Power Button Functions:

Mist:

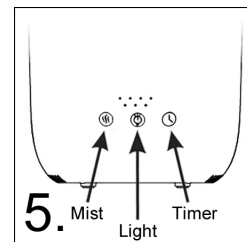
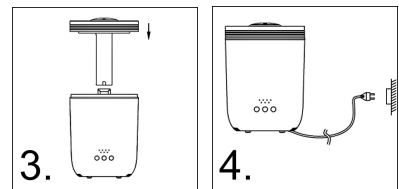
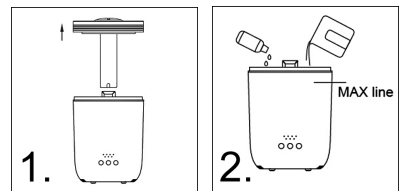
- 1st Push = Continuous diffusion on High mist intensity with "H" Power Indicator light and bright white light On
- 2nd Push = Continuous diffusion on Low mist intensity with "L" Power Indicator light and bright white light On
- 3rd Push = Sleep Mode: Low mist intensity without lights
During Sleep Mode, all lights will turn off except the Power Indicator Light

Timer:

- 1st Push = Continuous diffusion for 2 hours, then Off
- 2nd Push = Continuous diffusion for 4 hours, then Off
- 3rd Push = Continuous diffusion for 8 hours, then Off
- 4th Push = Continuous diffusion

Light:

- 1st Push = Soft white light
- 2nd Push = Turns light Off
- 3rd Push = Bright white light



NOTES:

- Only use 100% pure essential oil. Other types, such as fragrance and synthetic oils, may cause corrosion that can damage your diffuser and void our warranty.
- The unit will stop misting when water level becomes too low.
- Disconnect the power cord from electrical outlet when not in use.
- Keep unit out of reach of children and pets.