

# SHARPER IMAGE®

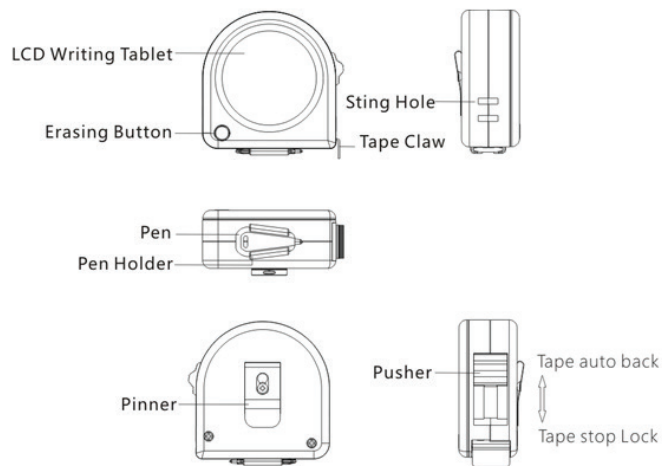
## MEASURING TAPE WITH LCD SKETCH PAD

Item No. 206904

### User Guide

Thank you for purchasing the Sharper Image Measuring Tape w/ LCD Sketch Pad. Please take a moment to read this guide and store it for future reference.

## IDENTIFICATION OF PARTS



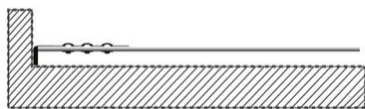
## HOW TO USE

1. Pull the tape out of the device to start measuring.
2. Lock the tape by pushing the manual lock down.
3. Press the pusher in the opposite direction to activate auto back to roll the tape back into the device.
4. Write on the LCD screen using the included pen on the side of the device.
5. Erase by pressing the erasing button next to the screen.

**Note:** The device can be pinned on your belt using the pinner clip.

## TAPE CLAW AUTO-CORRECTION

1. 0 base point by outside edge of Tape Claw



2. 0 base point by inside edge of Tape Claw



## **SPECIFICATIONS**

Dimension: 2.9" L x 1.4"W x 2.9" H

Tape: 16 ft. long

Power: Built-in CR1225 battery

Force of writing: 150~250g

Weight: 0.31 lb

## **WARRANTY / CUSTOMER SERVICE**

Sharper Image branded items purchased from [SharperImage.com](http://SharperImage.com) include a 1-year limited replacement warranty. If you have any questions not covered in this guide, please call our Customer Service department at 1 (877) 210-3449. Customer Service agents are available Monday through Friday, 9:00 a.m. to 6:00 p.m. ET.

**SHARPER IMAGE®**

The SHARPER IMAGE® name and logo are registered trademarks.

©Sharper Image. All Rights Reserved.