

# Air Revitalizer

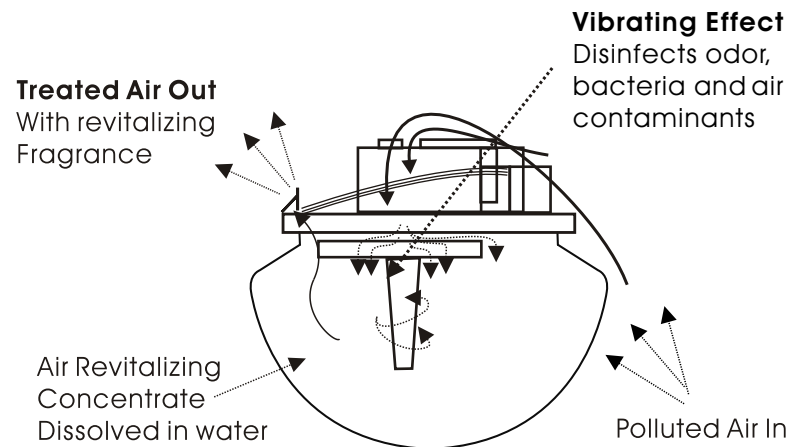
## INSTRUCTION MANUAL

Please read all instructions carefully. Improper handling and abuse of the product will deem the warranty as void. One year warranty from the date of purchase.

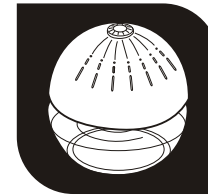
### IMPORTANT

- Always disconnect the main cord from the electrical outlet before removing the top cover or when the equipment is not in use.
- Do not submerge the top cover into water or wash under a running tap.
- Use only a damp cloth or sponge to clean, do not use any cleaning products.
- Do not overfill the water container. Keep the water below the maximum line.
- If the cord is damaged, DO NOT USE, refer to your service agent immediately.

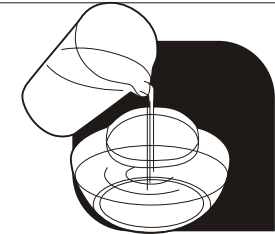
### HOW IT WORKS



## DIRECTIONS FOR USE



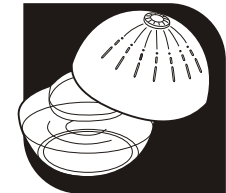
(1) Remove TOP-COVER.



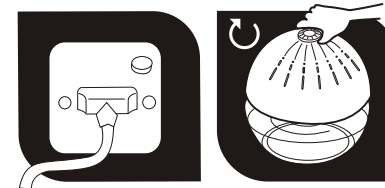
(2) Fill water container with clean tap water up to the MAXIMUM line.



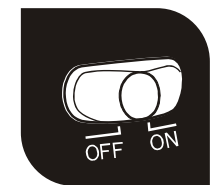
(3) Add recommended amount of air revitalizing concentrate into the water.



(4) Replace TOP-COVER Make sure TOP-COVER is securely seated on the water container.



(5) Plug in the electrical cord and press the button. Turn Speed Dial to ideal speed and noise that works best for you.



(6) Use switch on TOP-COVER to activate mood LED's.