

life made Limited Warranty Statement

life made warrants this product against defects in workmanship and material for a period of 12 months from the original date of purchase. If the product fails during normal and proper use within the warranty period, life made will repair or replace any products or parts determined to be defective in workmanship or material at its option. All components repaired or replaced by life made's service site will be under warranty for the remaining period of warranty.

This Limited Warranty covers only the accessory components packaged with this product. This Limited Warranty does not include failure caused by improper installation, operation, cleaning or maintenance, accident, damage caused by extreme temperature, humidity or extreme electrical stress, misuse, abuse unauthorized modifications to the product, software faults, normal wear and tear or any other event, act, default or omission outside of life made's control or if the serial number has been defaced, altered or removed and the casing has been opened.

To obtain warranty service, please contact life made for specific instructions at the email below. Dated, documented proof of the original purchase is required.

life made Customer Service Representatives are available by emailing support@lifemade.com

This device complies with Part 15 of the FCC Rules. Operation is subject to the following two conditions:

- (1) This device may not cause harmful interference, and
- (2) This device must accept any interference received, including interference that may cause undesired operation.



QUICK START GUIDE



CHARGING VALET

Charge and Organize your Devices in Style

WARNING: Risk of electric shock. Risk of fire. To reduce the risk of electric shock, use only indoors. Do not plug into another relocatable power outlet. Avoid spilling or getting the device wet. Keep away from water. Do not charge electrical devices while stowed in storage compartment.

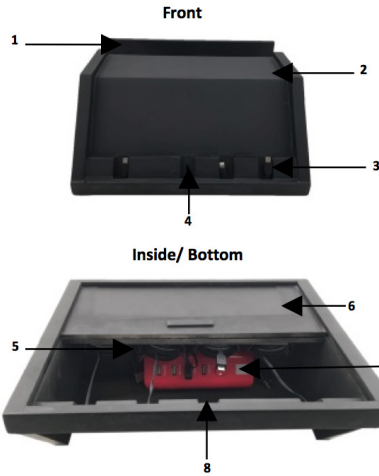
“The Charging Valet is designed to give you the perfect charging experience. The Charging Valet has four charging slots and a built in USB hub (with 4 USB ports) to customize as needed”

How to?

- 1. Plug the AC adapter into a wall outlet.
- 2. Plug your cables into the 4 port USB hub.
- 3. Place the cables through the valet cutouts.
- 4. Plug your devices in to begin charging.
- 5. Place devices on valet for storage.
- 6. Use the retractable cables to avoid clutter.
To use the retractable cables: Lightly extend the cord of the cable and the cable will being retracting automatically.

Specifications:

Total charging share 6.2V ,
2 lightning cable & 2 Micro cable .
-Output :DC 5V---7.2A
Input: AC 100-240V 50-60Hz
Work with all Mobile Phone and tablets, indoor using only



PART #	DESCRIPTION
1	Tablet/ Laptop Placement Cutout
2	Shelf
3	Extendable & retractable charging cord
4	Cutout for head of charger
5	Holder for charging cord
6	Sliding cover
7	USB Hub
8	inside view of charger head cutout

Safeguards:

- 1. DO NOT use the product for anything other than its intended use.
- 2. DO NOT store liquids inside the Charging Valet.
- 3. DO NOT keep the product near liquids on in liquids.
- 4. DO NOT keep the product near a fire.
- 5. DO NOT expose the device to extremely high or low temperatures.
- 6. DO NOT use if the device if it has been wet or moist due to electrical shock and/or injury to you and the device.
- 7. DO NOT use if the device has been damaged in any way.
- 8. Keep this product away from direct sunlight, humidity, liquids, and heat sources.
- 9. This unit is NOT a toy.
- 10. Repairs should only be performed by a qualified electrician. Improper repairs may put the user at serious risk.