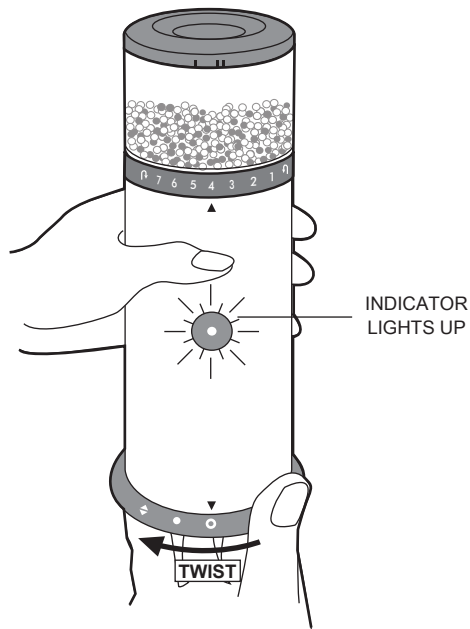


ELECTRONIC PEPPER MILL WITH LIGHT

9. Twist the base lid clockwise until the index **●** is aligned with the index **▼**. The stand-by indicator in the switch button will light up. The mechanism then allows the switch to function and the fresh-ground pepper or salt to pass through the opening in the base lid.

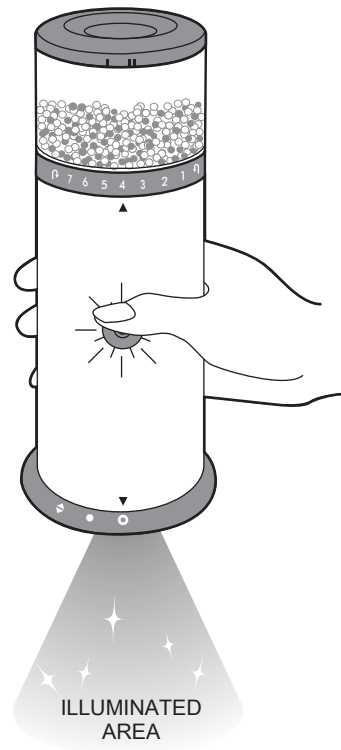


NOTE :
IF THE INDICATOR DOES NOT LIGHT UP, REPEAT THE STEP 3 AND ENSURE BATTERIES ARE INSERTED CORRECTLY.

ELECTRONIC PEPPER MILL WITH LIGHT

NOW, THE MILL IS READY FOR USE!

10. Hold the mill with a push of the switch button. Ground pepper or salt will start dispensing with light illuminating for the seasoning area.

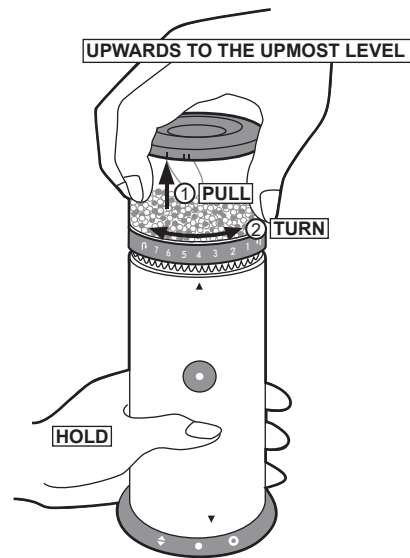


NOTE:
GROUND PEPPER OR SALT COMES OUT AT THE SAME SIDE WITH THE SWITCH BUTTON. GUIDE THE MILL FOR GRINDING EVENLY AND DIRECTLY OVER DISHES.

ELECTRONIC PEPPER MILL WITH LIGHT

TO SELECT GRIND SETTING

11. With one hand grasping the power unit, the other hand pulls the clear container upwards and turns it clockwise or anticlockwise to align one of the numeric settings with the index **▲**. 1 stands for the finest grind, and 7 serves with the coarsest grind. Release the clear container, and it'll be fully seated back with the power unit.

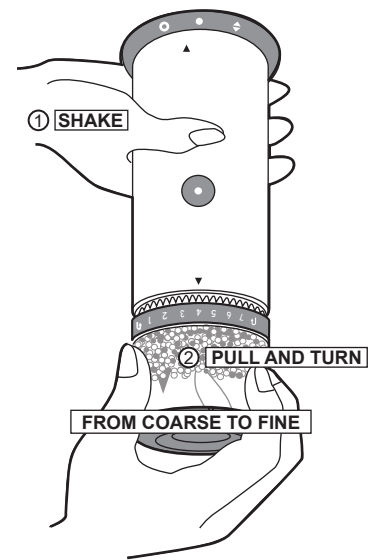


NOTE:
MAKE SURE TO PULL THE CLEAR CONTAINER UPWARDS TO THE UPMOST LEVEL, THEN TURN. DO NOT FORCE TO TURN THE CLEAR CONTAINER BEYOND THE RETURN SIGNS ↻ AND ↻.

ELECTRONIC PEPPER MILL WITH LIGHT

TO SELECT GRIND SETTING

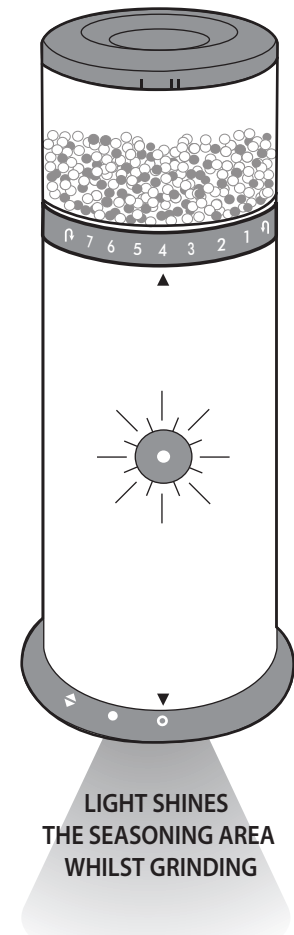
When going from coarse to fine grind, remove any remains to prevent obstructing the grinder by inverting the mill and shaking. Any remaining pepper or salt will be removed from the grinding mechanism so that the adjustment can go freely.



AFTER USE

Shake the mill to clear pepper or salt remainings, then twist the base lid anti-clockwise until **●** and **▼** are aligned. The mechanism then works to switch off the stand-by indicator and to keep tabletop free of spills.

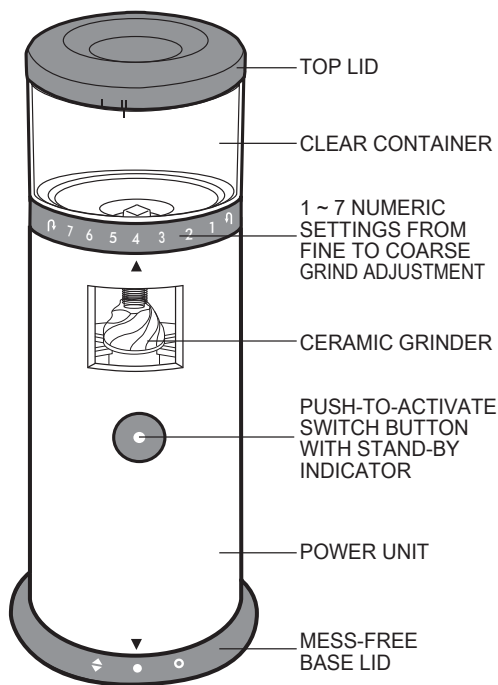
ELECTRONIC PEPPER MILL WITH LIGHT



SAVE THESE INSTRUCTIONS

ELECTRONIC PEPPER MILL WITH LIGHT

DIAGRAM



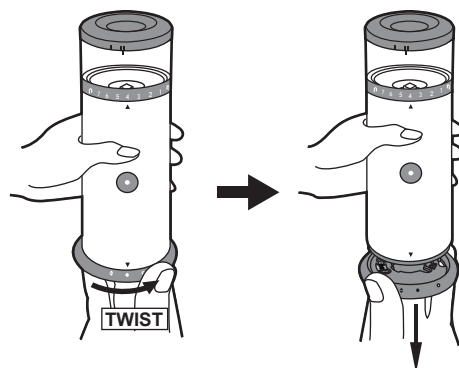
1

ELECTRONIC PEPPER MILL WITH LIGHT

TO INSERT BATTERIES

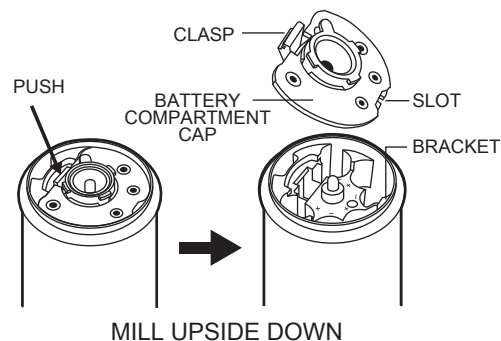
1. REMOVE THE MESS-FREE BASE LID

Twist the MESS-FREE base lid anti-clockwise until the printed index \blacklozenge on the lid and \blacktriangledown on the power unit are aligned, and the lid will come off from the mill.



2. REMOVE THE BATTERY COMPARTMENT CAP

Invert the mill. Push the clasp to pull the cap from the top of the compartment.

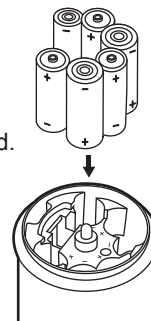


2

ELECTRONIC PEPPER MILL WITH LIGHT

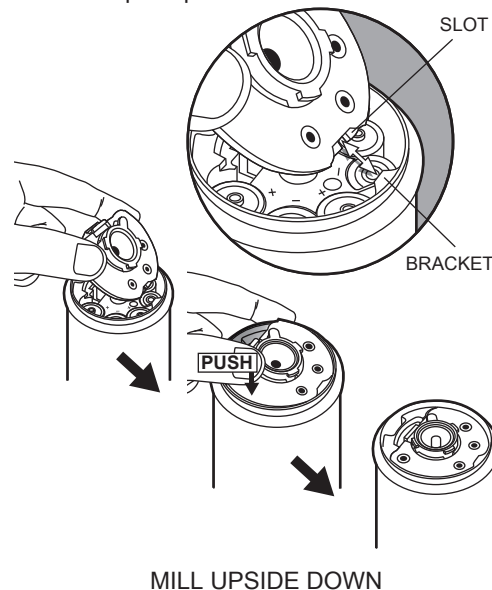
3. INSERT BATTERIES

Load 6 "AA" batteries into the battery compartment ensuring the polarity markings +, - are aligned.



4. REPLACE THE BATTERY COMPARTMENT CAP

Guide the slot in one end to insert into the bracket, then push the cap downwards until the clasp snaps.

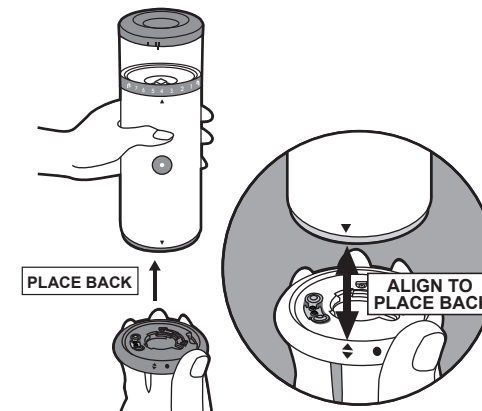


3

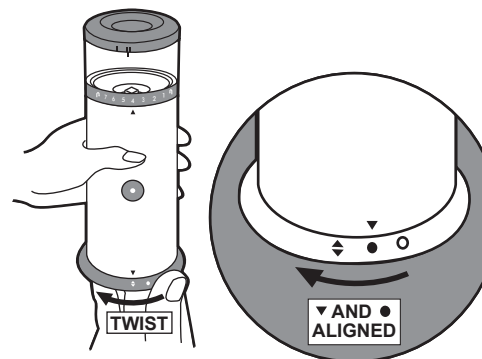
ELECTRONIC PEPPER MILL WITH LIGHT

5. REPLACE THE BASE LID

Hold the mill upright. Align the index \blacklozenge on the lid with the index \blacktriangledown on the power unit to place back the lid.



Then, twist the lid clockwise until the indexes \bullet and \blacktriangledown are aligned.



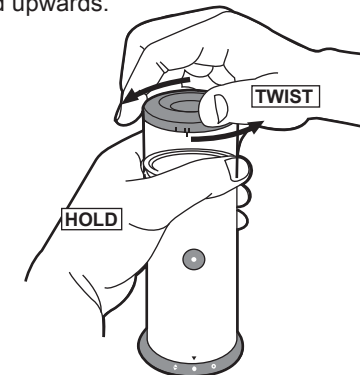
4

ELECTRONIC PEPPER MILL WITH LIGHT

TO FILL

6. REMOVE THE TOP LID

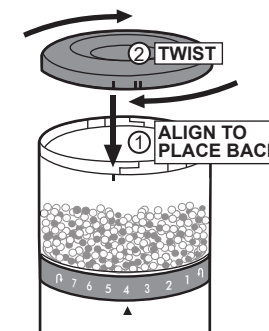
With one hand holding the clear container, the other hand twists the top lid anti-clockwise until it stops, then pull the lid upwards.



7. Pour peppercorns or coarse sea salt into the clear container.

8. REPLACE THE TOP LID

Align the index \blacksquare on both the lid and the clear container to place back the lid, then twist the lid clockwise until it stops.



5